

B♭ CLARINET

# LAND OF A THOUSAND DANCES

Words and Music by CHRIS KENNER  
Arranged by MIKE STORY

**1.** Bright rock

Musical score for 'Land of a Thousand Dances' for B♭ Clarinet. The score is in 4/4 time and begins with a treble clef and a key signature of one flat. It starts with a dynamic marking of *f*. The first line contains measures 1 through 8, with a box labeled '7' above measure 7. The second line contains measures 9 through 16, with a box labeled '13' above measure 13. The third line contains measures 17 through 24, with a box labeled '21' above measure 21. The piece concludes with a double bar line.

B♭ CLARINET

# GONNA FLY NOW

(Theme from "Rocky")

Music by BILL CONTI  
Arranged by MIKE STORY

**3.** Moderately

Musical score for 'Gonna Fly Now' for B♭ Clarinet. The score is in 4/4 time and begins with a treble clef and a key signature of one flat. It starts with a dynamic marking of *f*. The first line contains measures 1 through 5, with a box labeled '5' above measure 5. The second line contains measures 6 through 12, with a box labeled '12|2' above measure 12. The third line contains measures 13 through 21, with a box labeled '13' above measure 13. The piece concludes with a double bar line.

© 1976, 1977 UNITED ARTISTS CORPORATION  
All Rights Assigned to and Controlled by EMI U CATALOG INC./ EMI UNART CATALOG INC. (Publishing)  
and WARNER BROS. PUBLICATIONS U.S. INC. (Print)  
Performance for Profit

B♭ CLARINET

# LAND OF A THOUSAND DANCES

Words and Music by CHRIS KENNER  
Arranged by MIKE STORY

**1.** Bright rock

Musical score for 'Land of a Thousand Dances' for B♭ Clarinet. The score is in 4/4 time and begins with a treble clef and a key signature of one flat. It starts with a dynamic marking of *f*. The first line contains measures 1 through 8, with a box labeled '7' above measure 7. The second line contains measures 9 through 16, with a box labeled '13' above measure 13. The third line contains measures 17 through 24, with a box labeled '21' above measure 21. The piece concludes with a double bar line.

B♭ CLARINET

# GONNA FLY NOW

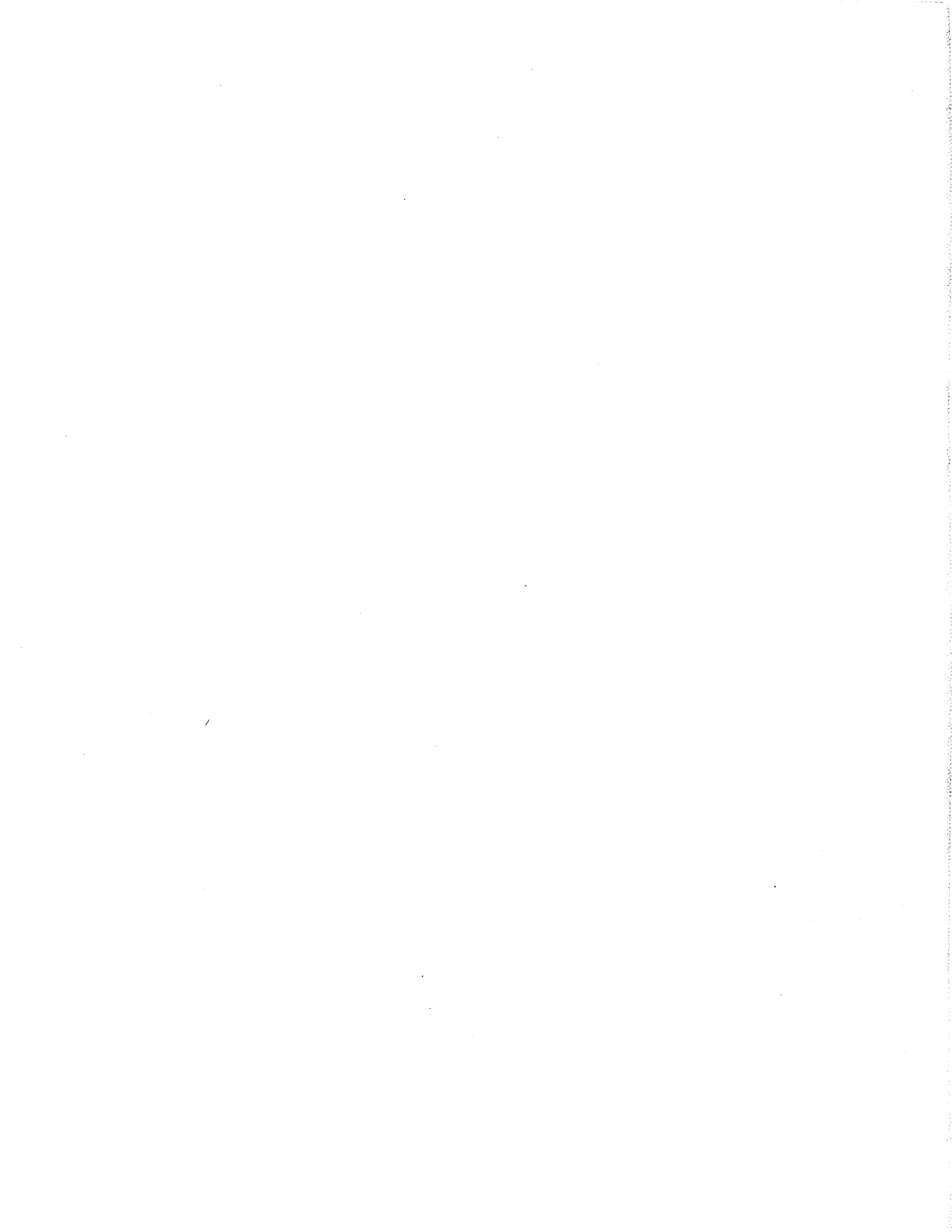
(Theme from "Rocky")

Music by BILL CONTI  
Arranged by MIKE STORY

**3.** Moderately

Musical score for 'Gonna Fly Now' for B♭ Clarinet. The score is in 4/4 time and begins with a treble clef and a key signature of one flat. It starts with a dynamic marking of *f*. The first line contains measures 1 through 5, with a box labeled '5' above measure 5. The second line contains measures 6 through 12, with a box labeled '12|2' above measure 12. The third line contains measures 13 through 21, with a box labeled '13' above measure 13. The piece concludes with a double bar line.

© 1976, 1977 UNITED ARTISTS CORPORATION  
All Rights Assigned to and Controlled by EMI U CATALOG INC./ EMI UNART CATALOG INC. (Publishing)  
and WARNER BROS. PUBLICATIONS U.S. INC. (Print)



# LOUIE, LOUIE

By RICHARD BERRY  
Arranged by MIKE STORY

16. Bright rock

5

Musical notation for the first system of 'Louie, Louie', measures 1-8. It features a treble clef, a key signature of one flat, and a 4/4 time signature. The melody is marked with a forte 'f' dynamic. Measure numbers 1 through 8 are indicated below the staff.

© 1957 WINDSWEEP PACIFIC ENTERTAINMENT CO. d/b/a LONGITUDE MUSIC CO. Copyright Renewed  
This Arrangement © 1998 LONGITUDE MUSIC CO.  
All Rights Reserved including Public Performance for Profit

MBF9803

4

B♭ CLARINET

# YOUR MAMA DON'T DANCE

Words and Music by  
KENNY LOGGINS and JIM MESSINA  
Arranged by MIKE STORY

5. Bright swing-rock. (♩ =  $\frac{3}{4}$  ♩)

Musical notation for the first system of 'Your Mama Don't Dance', measures 1-8. It features a treble clef, a key signature of one flat, and a 3/4 time signature. The melody is marked with a forte 'f' dynamic. Measure numbers 1 through 8 are indicated below the staff.

© 1979 JACOBSON & MUSIC CO. and WINGATE MUSIC CORP.

# LOUIE, LOUIE

By RICHARD BERRY  
Arranged by MIKE STORY

16. Bright rock

5

Musical notation for the first system of 'Louie, Louie', measures 1-8. It features a treble clef, a key signature of one flat, and a 4/4 time signature. The melody is marked with a forte 'f' dynamic. Measure numbers 1 through 8 are indicated below the staff.

© 1957 WINDSWEEP PACIFIC ENTERTAINMENT CO. d/b/a LONGITUDE MUSIC CO. Copyright Renewed  
This Arrangement © 1998 LONGITUDE MUSIC CO.  
All Rights Reserved including Public Performance for Profit

MBF9803

4

B♭ CLARINET

# YOUR MAMA DON'T DANCE

Words and Music by  
KENNY LOGGINS and JIM MESSINA  
Arranged by MIKE STORY

5. Bright swing-rock (♩ =  $\frac{3}{4}$  ♩)

Musical notation for the first system of 'Your Mama Don't Dance', measures 1-8. It features a treble clef, a key signature of one flat, and a 3/4 time signature. The melody is marked with a forte 'f' dynamic. Measure numbers 1 through 8 are indicated below the staff.

© 1979 JACOBSON & MUSIC CO. and WINGATE MUSIC CORP.



B♭ CLARINET

# BARBARA ANN

Words and Music by FRED FASSERT  
Arranged by MIKE STORY

11. Bright rock

Musical notation for 'Barbara Ann' for B♭ Clarinet. It consists of two staves. The first staff starts with a treble clef, a key signature of one flat (B♭), and a 4/4 time signature. It begins with a dynamic marking of *f* and includes fingerings 3, 5, and 11. The second staff continues the melody with fingerings 12, 13, 14, 15, 16, 17, and 18.

© 1961 (Renewed) WINDSWEPT PACIFIC ENTERTAINMENT CO. d/b/a LONGITUDE MUSIC CO./COUSINS MUSIC  
This Arrangement © 1998 (Renewed) WINDSWEPT PACIFIC ENTERTAINMENT CO. d/b/a LONGITUDE MUSIC CO./COUSINS MUSIC  
All Rights Reserved including Public Performance for Profit

# GIMME SOME LOVIN'

Words and Music by STEVE WINWOOD,  
MUFF WINWOOD and SPENCER DAVIS  
Arranged by MIKE STORY

12. Bright rock

Musical notation for 'Gimme Some Lovin'' for B♭ Clarinet. It consists of two staves. The first staff starts with a treble clef, a key signature of one flat (B♭), and a 4/4 time signature. It begins with a dynamic marking of *f* and includes fingerings 4 and 5. The second staff continues the melody with fingerings 11, 12, 13, 14, 15, and 16.

© 1966, 1980 ISLAND MUSIC LTD. & F. S. MUSIC LTD. This Arrangement © 1998 ISLAND MUSIC LTD. & F. S. MUSIC LTD.  
All Rights on behalf of F. S. MUSIC LTD. Administered by WARNER-TAMERLANE PUBLISHING CORP.  
MBF9803

B♭ CLARINET

# BARBARA ANN

Words and Music by FRED FASSERT  
Arranged by MIKE STORY

11. Bright rock

Musical notation for 'Barbara Ann' for B♭ Clarinet. It consists of two staves. The first staff starts with a treble clef, a key signature of one flat (B♭), and a 4/4 time signature. It begins with a dynamic marking of *f* and includes fingerings 3, 5, and 11. The second staff continues the melody with fingerings 12, 13, 14, 15, 16, 17, and 18.

© 1961 (Renewed) WINDSWEPT PACIFIC ENTERTAINMENT CO. d/b/a LONGITUDE MUSIC CO./COUSINS MUSIC  
This Arrangement © 1998 (Renewed) WINDSWEPT PACIFIC ENTERTAINMENT CO. d/b/a LONGITUDE MUSIC CO./COUSINS MUSIC  
All Rights Reserved including Public Performance for Profit

# GIMME SOME LOVIN'

Words and Music by STEVE WINWOOD,  
MUFF WINWOOD and SPENCER DAVIS  
Arranged by MIKE STORY

12. Bright rock

Musical notation for 'Gimme Some Lovin'' for B♭ Clarinet. It consists of two staves. The first staff starts with a treble clef, a key signature of one flat (B♭), and a 4/4 time signature. It begins with a dynamic marking of *f* and includes fingerings 4 and 5. The second staff continues the melody with fingerings 11, 12, 13, 14, 15, and 16.

© 1966, 1980 ISLAND MUSIC LTD. & F. S. MUSIC LTD. This Arrangement © 1998 ISLAND MUSIC LTD. & F. S. MUSIC LTD.  
All Rights on behalf of F. S. MUSIC LTD. Administered by WARNER-TAMERLANE PUBLISHING CORP.  
MBF9803









# Iron Man

Clarinet in B $\flat$



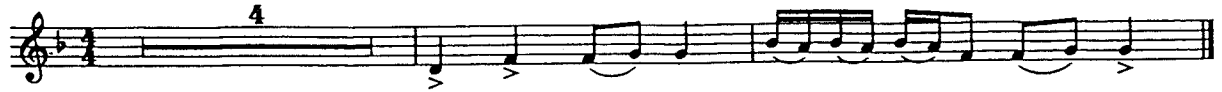
# Jump On It

Clarinet in B $\flat$



# Iron Man

Clarinet in B $\flat$



# Jump On It

Clarinet in B $\flat$





# Dynamite

Clarinet in B $\flat$

Musical score for Clarinet in B $\flat$  for the song "Dynamite". The score consists of two staves. The first staff contains the main melody, which is a rhythmic eighth-note pattern with various accents and slurs. The second staff, starting at measure 6, provides a harmonic accompaniment with a similar rhythmic pattern. The name "Taio Cruz" is written at the end of the first staff.

# Born This Way

Clarinet in B $\flat$

Musical score for Clarinet in B $\flat$  for the song "Born This Way". The score consists of two staves. The first staff contains the main melody, featuring a complex rhythmic pattern with many slurs and accents. The second staff, starting at measure 7, provides a harmonic accompaniment with a similar rhythmic pattern. The name "Taio Cruz" is written at the end of the first staff.

# Dynamite

Clarinet in B $\flat$

Musical score for Clarinet in B $\flat$  for the song "Dynamite". The score consists of two staves. The first staff contains the main melody, which is a rhythmic eighth-note pattern with various accents and slurs. The second staff, starting at measure 6, provides a harmonic accompaniment with a similar rhythmic pattern. The name "Taio Cruz" is written at the end of the first staff.

# Born This Way

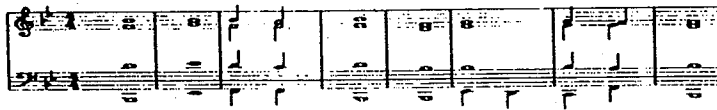
Clarinet in B $\flat$

Musical score for Clarinet in B $\flat$  for the song "Born This Way". The score consists of two staves. The first staff contains the main melody, featuring a complex rhythmic pattern with many slurs and accents. The second staff, starting at measure 7, provides a harmonic accompaniment with a similar rhythmic pattern. The name "Taio Cruz" is written at the end of the first staff.



# 2 "Basic Change" by Stephen Mellillo

RHYTHM	-	-	J	J	-	'	-	-	J	J	-
<b>S</b>	1 <sup>(6)</sup>	1 <sup>(6)</sup>	1 <sup>(6)</sup>	7	1 <sup>(6)</sup>		5	6	6	5	5
<b>A</b>	5	6	5	5	5		3	4	4	4	3
<b>T</b>	3	4	3	2	3		1	1	1	7	1
<b>B</b>	1	4	5	5	1		1	J	J	5	
								4	3		
Chords in B <sup>♭</sup>	B <sup>♭</sup>	E <sup>♭</sup>	B <sup>♭</sup> F	B <sup>♭</sup>	B <sup>♭</sup>	B <sup>♭</sup>	E <sup>♭</sup>	Cm <sup>♭</sup> F <sup>♭</sup>	B <sup>♭</sup>		
Analysis	I	IV	I <sup>♯</sup> V	I	I	I	IV	ii <sup>♭</sup> V <sup>♭</sup>	I		



# 2 "Basic Change" by Stephen Mellillo

RHYTHM	-	-	J	J	-	'	-	-	J	J	-
<b>S</b>	1 <sup>(6)</sup>	1 <sup>(6)</sup>	1 <sup>(6)</sup>	7	1 <sup>(6)</sup>		5	6	6	5	5
<b>A</b>	5	6	5	5	5		3	4	4	4	3
<b>T</b>	3	4	3	2	3		1	1	1	7	1
<b>B</b>	1	4	5	5	1		1	J	J	5	
								4	3		
Chords in B <sup>♭</sup>	B <sup>♭</sup>	E <sup>♭</sup>	B <sup>♭</sup> F	B <sup>♭</sup>	B <sup>♭</sup>	B <sup>♭</sup>	E <sup>♭</sup>	Cm <sup>♭</sup> F <sup>♭</sup>	B <sup>♭</sup>		
Analysis	I	IV	I <sup>♯</sup> V	I	I	I	IV	ii <sup>♭</sup> V <sup>♭</sup>	I		



