

Tuba

SOAK UP THE SUN

Written by JEFF TROTT & SHERYL CROW
arranged by TOM WALLACE
percussion by TONY McCUTCHEEN

Rock $\text{♩} = 148$

Musical score for Tuba part of 'Soak Up the Sun'. The score is written in bass clef with a key signature of one flat (Bb) and a tempo of 148 beats per minute. It consists of 54 measures across seven staves. The music features a driving eighth-note pattern with various dynamics including *ff*, *mf*, *f*, and *fff*. There are several accents and slurs throughout. Measure numbers 5, 13, 21, 29, 34, 42, and 48 are boxed. A double bar line with a repeat sign is at measure 31.

Copyright © 2001 Cyrillic Soup (ASCAP) administered by Wixen Music Publishing, Inc.
Copyright © 2001 Warner-Tamerlane Publishing Corp. / Old Crow Music (BMI)
administered by Warner-Tamerlane Publishing Corp. (BMI)

Tuba

SOAK UP THE SUN

Written by JEFF TROTT & SHERYL CROW
arranged by TOM WALLACE
percussion by TONY McCUTCHEEN

Rock $\text{♩} = 148$

Musical score for Tuba part of 'Soak Up the Sun'. This is an identical copy of the score above. It consists of 54 measures across seven staves in bass clef with a key signature of one flat (Bb) and a tempo of 148 beats per minute. Dynamics include *ff*, *mf*, *f*, and *fff*. Measure numbers 5, 13, 21, 29, 34, 42, and 48 are boxed. A double bar line with a repeat sign is at measure 31.

Copyright © 2001 Cyrillic Soup (ASCAP) administered by Wixen Music Publishing, Inc.
Copyright © 2001 Warner-Tamerlane Publishing Corp. / Old Crow Music (BMI)
administered by Warner-Tamerlane Publishing Corp. (BMI)



1. Bright rock

Words and Music by CHRIS KENNEF
Arranged by MIKE STORY

Musical score for 'Land of a Thousand Dances' for Tuba. It consists of three staves of music. The first staff starts with a bass clef and a 4/4 time signature. The music is marked 'Bright rock' and includes measures 1 through 11. A first ending bracket labeled '1' spans measures 6 and 7. A second ending bracket labeled '2' spans measures 13 and 14. The second staff continues with measures 12 through 17. The third staff continues with measures 18 through 24. The score ends with a double bar line and a fortissimo (ff) dynamic marking.

© 1963 THURSDAY MUSIC CORP.

TUBA

3 GONNA FLY NOW

Music by BILL CONTI
Arranged by MIKE STORY

Musical score for 'Gonna Fly Now' for Tuba. It consists of two staves of music. The first staff starts with a bass clef and a 4/4 time signature. The music is marked 'Moderately' and includes measures 1 through 11. A first ending bracket labeled '1' spans measures 2 and 3. A second ending bracket labeled '2' spans measures 13 and 14. The second staff continues with measures 12 through 21. The score ends with a double bar line and a fortissimo (ff) dynamic marking.

© 1976, 1977 UNITED ARTISTS CORPORATION

EMULMART CATALOG INC. / EMLUMART CATALOG INC. (Publishing)

TUBA

LAND OF A THOUSAND DANCES

Words and Music by CHRIS KENNEF
Arranged by MIKE STORY

Musical score for 'Land of a Thousand Dances' for Tuba. It consists of three staves of music. The first staff starts with a bass clef and a 4/4 time signature. The music is marked 'Bright rock' and includes measures 1 through 11. A first ending bracket labeled '1' spans measures 6 and 7. A second ending bracket labeled '2' spans measures 13 and 14. The second staff continues with measures 12 through 17. The third staff continues with measures 18 through 24. The score ends with a double bar line and a fortissimo (ff) dynamic marking.

© 1963 THURSDAY MUSIC CORP.

TUBA

3 GONNA FLY NOW

Music by BILL CONTI
Arranged by MIKE STORY

Musical score for 'Gonna Fly Now' for Tuba. It consists of two staves of music. The first staff starts with a bass clef and a 4/4 time signature. The music is marked 'Moderately' and includes measures 1 through 11. A first ending bracket labeled '1' spans measures 2 and 3. A second ending bracket labeled '2' spans measures 13 and 14. The second staff continues with measures 12 through 21. The score ends with a double bar line and a fortissimo (ff) dynamic marking.

© 1976, 1977 UNITED ARTISTS CORPORATION

EMULMART CATALOG INC. / EMLUMART CATALOG INC. (Publishing)

Baritone Sax

Land of a Thousand Dances

Chris Kenner

Mike Story

Musical score for Baritone Sax, measures 6-19. The score is in treble clef with a key signature of two sharps (F# and C#). Measure 6 starts with a sixteenth-note triplet marked with a '6' above it and a dynamic marking of *f*. The melody continues through measures 12 and 19, ending with a dynamic marking of *ff* and a hairpin wedge.

Baritone Sax

Gonna Fly Now

Bill Conti

Mike Story

Musical score for Baritone Sax, measures 2-17. The score is in treble clef with a key signature of one sharp (F#) and a 4/4 time signature. Measure 2 starts with a quarter-note triplet marked with a '2' above it. The melody continues through measures 9 and 17, ending with a double bar line.

Baritone Sax

Land of a Thousand Dances

Chris Kenner

Mike Story

Musical score for Baritone Sax, measures 6-19. The score is in treble clef with a key signature of two sharps (F# and C#). Measure 6 starts with a sixteenth-note triplet marked with a '6' above it and a dynamic marking of *f*. The melody continues through measures 12 and 19, ending with a dynamic marking of *ff* and a hairpin wedge.

Baritone Sax

Gonna Fly Now

Bill Conti

Mike Story

Musical score for Baritone Sax, measures 2-17. The score is in treble clef with a key signature of one sharp (F#) and a 4/4 time signature. Measure 2 starts with a quarter-note triplet marked with a '2' above it. The melody continues through measures 9 and 17, ending with a double bar line.

TUBA

YOUR MAMA DON'T DANCE

Words and Music by
KENNY LOGGINS and JIM MESSINA
Arranged by MIKE STORY

5. Bright swing-rock (♩ = $\bar{J}^3 \bar{J}$)

Musical notation for the tuba part of 'Your Mama Don't Dance'. It consists of three staves of music in bass clef, 4/4 time. The first staff contains measures 1 through 7, with a '5 *sim.*' marking above measure 5. The second staff contains measures 8 through 14, with a 'V' marking below measure 14. The third staff contains measures 15 through 28, with a '15' marking above measure 15, a '17 *sim.*' marking above measure 17, and a 'ff' marking below measure 28.

LOUIE, LOUIE

By RICHARD BERRY
Arranged by MIKE STORY

16. Bright rock

Musical notation for the tuba part of 'Louie, Louie'. It consists of two staves of music in bass clef, 4/4 time. The first staff contains measures 1 through 7, with a '5' marking above measure 5. The second staff contains measures 8 through 15.

© 1957 WINDSWEEP PACIFIC ENTERTAINMENT CO. d/b/a LONGITUDE MUSIC CO. Copyright Renewed
This Arrangement © 1998 LONGITUDE MUSIC CO.
All Rights Reserved including Public Performance for Profit

MBF9816

4

TUBA

YOUR MAMA DON'T DANCE

Words and Music by
KENNY LOGGINS and JIM MESSINA
Arranged by MIKE STORY

5. Bright swing-rock (♩ = $\bar{J}^3 \bar{J}$)

Musical notation for the tuba part of 'Your Mama Don't Dance'. It consists of three staves of music in bass clef, 4/4 time. The first staff contains measures 1 through 7, with a '5 *sim.*' marking above measure 5. The second staff contains measures 8 through 14, with a 'V' marking below measure 14. The third staff contains measures 15 through 28, with a '15' marking above measure 15, a '17 *sim.*' marking above measure 17, and a 'ff' marking below measure 28.

LOUIE, LOUIE

By RICHARD BERRY
Arranged by MIKE STORY

16. Bright rock

Musical notation for the tuba part of 'Louie, Louie'. It consists of two staves of music in bass clef, 4/4 time. The first staff contains measures 1 through 7, with a '5' marking above measure 5. The second staff contains measures 8 through 15.

© 1957 WINDSWEEP PACIFIC ENTERTAINMENT CO. d/b/a LONGITUDE MUSIC CO. Copyright Renewed
This Arrangement © 1998 LONGITUDE MUSIC CO.
All Rights Reserved including Public Performance for Profit

MBF9816

Baritone Sax

Louie, Louie

Richard Berry
Mike Story

7

14

Baritone Sax

Your Mama Don't Dance

Kenny Loggins
Mike Story

8

15

23

f

ff

Baritone Sax

Louie, Louie

Richard Berry
Mike Story

7

14

Baritone Sax

Your Mama Don't Dance

Kenny Loggins
Mike Story

8

15

23

f

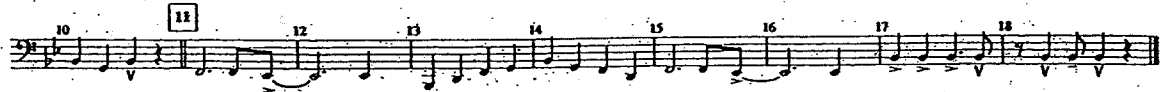
ff

TUBA

BARBARA ANN

Words and Music by FRED FASSERT
Arranged by MIKE STORY

11. Bright rock

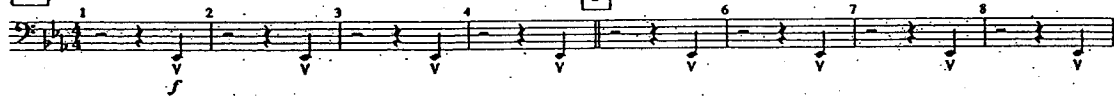


© 1961 (Renewed) WINDSWEPT PACIFIC ENTERTAINMENT CO. d/b/a LONGITUDE MUSIC CO./COUSINS MUSIC
This Arrangement © 1998 (Renewed) WINDSWEPT PACIFIC ENTERTAINMENT CO. d/b/a LONGITUDE MUSIC CO./COUSINS MUSIC
All Rights Reserved including Public Performance for Profit

GIMME SOME LOVIN'

Words and Music by STEVE WINWOOD,
MUFF WINWOOD and SPENCER DAVIS
Arranged by MIKE STORY

12. Bright rock



© 1966, 1980 ISLAND MUSIC LTD. & F. S. MUSIC LTD. This Arrangement © 1998 ISLAND MUSIC LTD. & F. S. MUSIC LTD.
All Rights on behalf of F. S. MUSIC LTD. Administered by WARNER-TAMERLANE PUBLISHING CORP.
All Rights Reserved including Public Performance for Profit

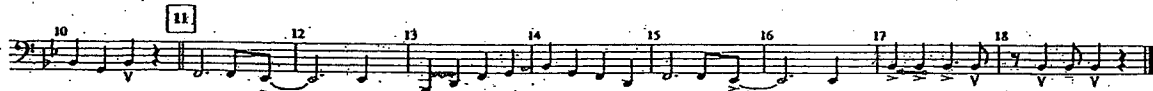
MBF9816

TUBA

BARBARA ANN

Words and Music by FRED FASSERT
Arranged by MIKE STORY

11. Bright rock

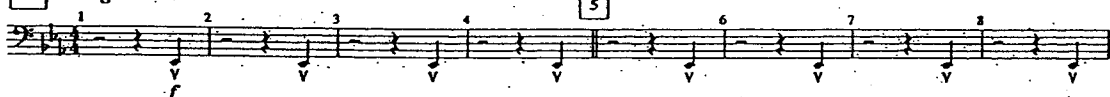


© 1961 (Renewed) WINDSWEPT PACIFIC ENTERTAINMENT CO. d/b/a LONGITUDE MUSIC CO./COUSINS MUSIC
This Arrangement © 1998 (Renewed) WINDSWEPT PACIFIC ENTERTAINMENT CO. d/b/a LONGITUDE MUSIC CO./COUSINS MUSIC
All Rights Reserved including Public Performance for Profit

GIMME SOME LOVIN'

Words and Music by STEVE WINWOOD,
MUFF WINWOOD and SPENCER DAVIS
Arranged by MIKE STORY

12. Bright rock



© 1966, 1980 ISLAND MUSIC LTD. & F. S. MUSIC LTD. This Arrangement © 1998 ISLAND MUSIC LTD. & F. S. MUSIC LTD.
All Rights on behalf of F. S. MUSIC LTD. Administered by WARNER-TAMERLANE PUBLISHING CORP.
All Rights Reserved including Public Performance for Profit

MBF9816

Baritone Sax

Gimme Some Lovin'

Steve Winwood

Mike Story

Two staves of musical notation for the first system. The first staff contains measures 1 through 8, and the second staff contains measures 9 through 16. The music is written in treble clef with a key signature of one sharp (F#) and a 4/4 time signature. The melody consists of eighth and quarter notes.

Baritone Sax

Barbara Ann

Fred Fassett

Mike Story

Three staves of musical notation for the first system. The first staff contains measures 1 through 8, the second staff contains measures 9 through 16, and the third staff contains measures 17 through 24. The music is written in treble clef with a key signature of one sharp (F#) and a 4/4 time signature. The melody features eighth notes with accents and quarter notes.

Baritone Sax

Gimme Some Lovin'

Steve Winwood

Mike Story

Two staves of musical notation for the second system. The first staff contains measures 1 through 8, and the second staff contains measures 9 through 16. The music is written in treble clef with a key signature of one sharp (F#) and a 4/4 time signature.

Baritone Sax

Barbara Ann

Fred Fassett

Mike Story

Three staves of musical notation for the second system. The first staff contains measures 1 through 8, the second staff contains measures 9 through 16, and the third staff contains measures 17 through 24. The music is written in treble clef with a key signature of one sharp (F#) and a 4/4 time signature.

NFL on Fox Theme

Tuba

Reed Hays, Scott Schreer, and Phil Garrod

March $\text{♩} = 108$

Musical score for Tuba, NFL on Fox Theme, measures 1-20. The score is written in bass clef, 4/4 time, with a key signature of two flats (B-flat and E-flat). The tempo is marked as March $\text{♩} = 108$. The score consists of four staves of music. The first staff (measures 1-6) begins with a whole rest, followed by a series of eighth notes and quarter notes. The second staff (measures 7-12) features a continuous eighth-note pattern. The third staff (measures 13-18) continues with eighth notes and quarter notes. The fourth staff (measures 19-20) concludes with a quarter note and a whole rest.

© 2005 Fox Film Music Corp.

NFL on Fox Theme

Tuba

Reed Hays, Scott Schreer, and Phil Garrod

March $\text{♩} = 108$

Musical score for Tuba, NFL on Fox Theme, measures 1-20. The score is written in bass clef, 4/4 time, with a key signature of two flats (B-flat and E-flat). The tempo is marked as March $\text{♩} = 108$. The score consists of four staves of music. The first staff (measures 1-6) begins with a whole rest, followed by a series of eighth notes and quarter notes. The second staff (measures 7-12) features a continuous eighth-note pattern. The third staff (measures 13-18) continues with eighth notes and quarter notes. The fourth staff (measures 19-20) concludes with a quarter note and a whole rest.

© 2005 Fox Film Music Corp.

NFL on Fox Theme

Baritone Sax.

Reed Hays, Scott Schreer, and Phil Garrod

March ♩ = 108

Musical score for Baritone Sax, NFL on Fox Theme, measures 1-24. The score is written in 4/4 time with a tempo of 108 beats per minute. It consists of four staves of music. The first staff (measures 1-7) begins with a treble clef and a key signature of one flat (Bb). The melody starts with a quarter rest, followed by quarter notes G4, A4, Bb4, and C5. The second staff (measures 8-13) continues the melody with eighth notes. The third staff (measures 14-20) features a more complex rhythmic pattern with eighth and sixteenth notes. The fourth staff (measures 21-24) concludes the piece with a final cadence.

© 2005 Fox Film Music Corp.

NFL on Fox Theme

Baritone Sax.

Reed Hays, Scott Schreer, and Phil Garrod

March ♩ = 108

Musical score for Baritone Sax, NFL on Fox Theme, measures 1-24. This score is identical to the one above, featuring four staves of music in 4/4 time at 108 bpm. It begins with a treble clef and a key signature of one flat (Bb). The melody starts with a quarter rest, followed by quarter notes G4, A4, Bb4, and C5. The second staff (measures 8-13) continues the melody with eighth notes. The third staff (measures 14-20) features a more complex rhythmic pattern with eighth and sixteenth notes. The fourth staff (measures 21-24) concludes the piece with a final cadence.

© 2005 Fox Film Music Corp.

Iron Man

Tuba

5

Musical notation for the Tuba part of the first 'Iron Man' section. It consists of two staves of music in bass clef with a key signature of two flats and a 4/4 time signature. The first staff contains measures 1 through 4, and the second staff contains measures 5 through 8. The music features a rhythmic pattern of eighth and quarter notes with various articulations.

Jump On It

Tuba

7

Musical notation for the Tuba part of the first 'Jump On It' section. It consists of two staves of music in bass clef with a key signature of two flats and a 4/4 time signature. The first staff contains measures 1 through 4, and the second staff contains measures 5 through 8. The music features a rhythmic pattern of eighth and quarter notes with various articulations.

Iron Man

Tuba

5

Musical notation for the Tuba part of the second 'Iron Man' section. It consists of two staves of music in bass clef with a key signature of two flats and a 4/4 time signature. The first staff contains measures 1 through 4, and the second staff contains measures 5 through 8. The music features a rhythmic pattern of eighth and quarter notes with various articulations.

Jump On It

Tuba

7

Musical notation for the Tuba part of the second 'Jump On It' section. It consists of two staves of music in bass clef with a key signature of two flats and a 4/4 time signature. The first staff contains measures 1 through 4, and the second staff contains measures 5 through 8. The music features a rhythmic pattern of eighth and quarter notes with various articulations.

Iron Man

Baritone Sax.



Jump On It

Baritone Sax.



Iron Man

Baritone Sax.



Jump On It

Baritone Sax.



Dynamite

Tuba

Taio Cruz

Two staves of musical notation for the tuba part of 'Dynamite'. The first staff contains measures 1 through 5, and the second staff contains measures 6 through 10. The music is in 4/4 time with a key signature of one flat (Bb). The melody consists of eighth and quarter notes, often beamed together.

Born This Way

Tuba

Two staves of musical notation for the tuba part of 'Born This Way'. The first staff contains measures 1 through 7, and the second staff contains measures 8 through 11. The music is in 4/4 time with a key signature of one flat (Bb). The melody features a mix of eighth and quarter notes, with some rests.

Dynamite

Tuba

Taio Cruz

Two staves of musical notation for the tuba part of 'Dynamite'. The first staff contains measures 1 through 5, and the second staff contains measures 6 through 10. The music is in 4/4 time with a key signature of one flat (Bb). The melody consists of eighth and quarter notes, often beamed together.

Born This Way

Tuba

Two staves of musical notation for the tuba part of 'Born This Way'. The first staff contains measures 1 through 7, and the second staff contains measures 8 through 11. The music is in 4/4 time with a key signature of one flat (Bb). The melody features a mix of eighth and quarter notes, with some rests.

Dynamite

Baritone Sax.

Taio Cruz

Musical notation for the Baritone Sax part of 'Dynamite' by Taio Cruz. The score consists of two staves. The first staff contains measures 1 through 5, and the second staff contains measures 6 through 10. The key signature is one sharp (F#) and the time signature is 4/4. The melody is a rhythmic eighth-note pattern.

Born This Way

Baritone Sax.

Musical notation for the Baritone Sax part of 'Born This Way'. The score consists of two staves. The first staff contains measures 1 through 7, and the second staff contains measures 8 through 11. The key signature is one sharp (F#) and the time signature is 4/4. The melody features a mix of eighth and quarter notes with accents.

Dynamite

Baritone Sax.

Taio Cruz

Musical notation for the Baritone Sax part of 'Dynamite' by Taio Cruz. The score consists of two staves. The first staff contains measures 1 through 5, and the second staff contains measures 6 through 10. The key signature is one sharp (F#) and the time signature is 4/4. The melody is a rhythmic eighth-note pattern.

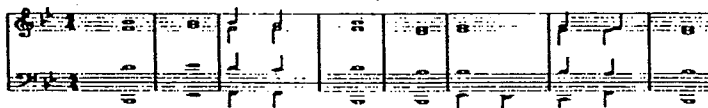
Born This Way

Baritone Sax.

Musical notation for the Baritone Sax part of 'Born This Way'. The score consists of two staves. The first staff contains measures 1 through 7, and the second staff contains measures 8 through 11. The key signature is one sharp (F#) and the time signature is 4/4. The melody features a mix of eighth and quarter notes with accents.

2 "Basic Change" by Stephen Mellillo

RHYTHM	-	-	J J	-	-	-	J J	-
S	1 ⁽⁶⁾	1 ⁽⁶⁾	1 ⁽⁶⁾ 7	1 ⁽⁶⁾	5	6	6 5	5
A	5	6	5 5	5	3	4	4 4	3
T	3	4	3 2	3	1	1	1 7	1
B	1	4	5 5	1	1	J J 4 3	5	2 1
Chords in B [♭]	B [♭]	E [♭]	B [♭] F	B [♭]	B [♭]	E [♭]	Cm [♭] F [♭]	B [♭]
Analysis	I	IV	I [♯] V	I	I	IV	ii [♭] V [♭]	I



2 "Basic Change" by Stephen Mellillo

RHYTHM	-	-	J J	-	-	-	J J	-
S	1 ⁽⁶⁾	1 ⁽⁶⁾	1 ⁽⁶⁾ 7	1 ⁽⁶⁾	5	6	6 5	5
A	5	6	5 5	5	3	4	4 4	3
T	3	4	3 2	3	1	1	1 7	1
B	1	4	5 5	1	1	J J 4 3	5	2 1
Chords in B [♭]	B [♭]	E [♭]	B [♭] F	B [♭]	B [♭]	E [♭]	Cm [♭] F [♭]	B [♭]
Analysis	I	IV	I [♯] V	I	I	IV	ii [♭] V [♭]	I



